

# Discharge Measurement Summary

**Site name** ECanal6  
**Site number** 01  
**Operator(s)** VAllen  
**File name** EastCanal\_20230614\_1052.ft  
**Comment**

<b>Start time</b>	6/14/2023 10:52 AM	<b>Sensor type</b>	Top Setting
<b>End time</b>	6/14/2023 11:44 AM	<b>Handheld serial number</b>	FT2H2219029
<b>Start location latitude</b>	42.809	<b>Probe serial number</b>	FT2P2219014
<b>Start location longitude</b>	-118.869	<b>Probe firmware</b>	1.30
<b>Calculations engine</b>	FlowTracker2	<b>Handheld software</b>	1.7

<b># Stations</b>	<b>Avg interval (s)</b>	<b>Total discharge (m<sup>3</sup>/s)</b>
26	40	1.1382

<b>Total width (m)</b>	<b>Total area (m<sup>2</sup>)</b>	<b>Wetted Perimeter (m)</b>
3.810	1.76469	4.470

<b>Mean SNR (dB)</b>	<b>Mean depth (m)</b>	<b>Mean velocity (m/s)</b>
52	0.463	0.6450

<b>Mean temp (°C)</b>	<b>Max depth (m)</b>	<b>Max velocity (m/s)</b>
11.063	0.543	0.8920

Discharge Uncertainty		
Category	ISO	IVE
Accuracy	1.0%	1.0%
Depth	0.1%	1.4%
Velocity	0.3%	1.3%
Width	0.1%	0.1%
Method	1.4%	
# Stations	2.0%	
Overall	2.6%	2.2%

<b>Discharge equation</b>	Mid Section
<b>Discharge uncertainty</b>	IVE
<b>Discharge reference</b>	Rated

Data Collection Settings	
<b>Salinity</b>	0.000 PSS-78
<b>Temperature</b>	-
<b>Sound speed</b>	-
<b>Mounting correction</b>	0.000 %

## Summary overview

No changes were made to this file  
Quality control warnings



# Discharge Measurement Summary

**Site name** ECanal6  
**Site number** 01  
**Operator(s)** VAllen  
**File name** EastCanal\_20230614\_1052.ft  
**Comment**

## Station Warning Settings

**Station discharge OK**

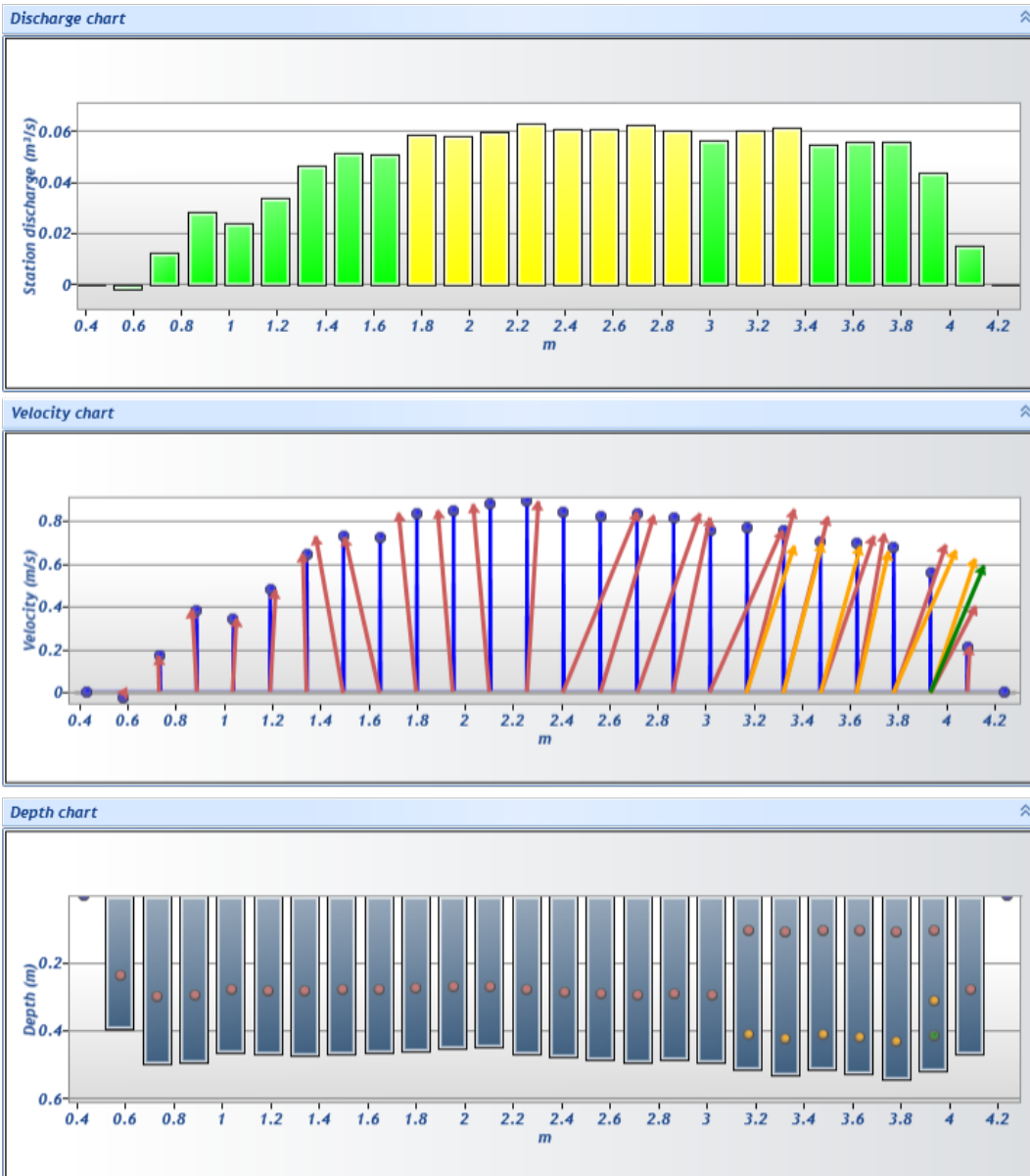
Station discharge < 5.00%

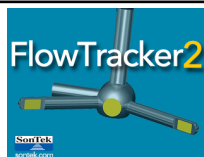
**Station discharge caution**

5.00% >= Station discharge < 10.00%

**Station discharge warning**

Station discharge >= 10.00%

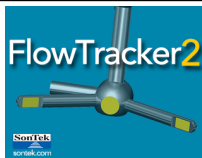




# Discharge Measurement Summary

**Site name** ECanal6  
**Site number** 01  
**Operator(s)** VAllen  
**File name** EastCanal\_20230614\_1052.ft  
**Comment**

Measurement results													
St#	Time	Location (m)	Method	Depth (m)	%Depth	Measured Depth (m)	Samples	Velocity (m/s)	Correction	Mean Velocity (m/s)	Area (m²)	Flow (m³/s)	%Q
0	10:52 AM	0.427	None	0.000	0.0000	0.000	0	0.0000	1.0000	-0.0260	0.00000	0.0000	0.00
1	10:52 AM	0.579	0.6	0.393	0.6000	0.236	80	-0.0260	1.0000	-0.0260	0.05992	-0.0016	-0.14
2	10:54 AM	0.732	0.6	0.497	0.6000	0.298	80	0.1696	1.0000	0.1696	0.07572	0.0128	1.13
3	10:55 AM	0.884	0.6	0.491	0.6000	0.294	80	0.3846	1.0000	0.3846	0.07479	0.0288	2.53
4	10:57 AM	1.036	0.6	0.463	0.6000	0.278	80	0.3435	1.0000	0.3435	0.07061	0.0243	2.13
5	10:58 AM	1.189	0.6	0.469	0.6000	0.282	80	0.4784	1.0000	0.4784	0.07154	0.0342	3.01
6	11:07 AM	1.341	0.6	0.472	0.6000	0.283	80	0.6473	1.0000	0.6473	0.07200	0.0466	4.09
7	11:08 AM	1.494	0.6	0.466	0.6000	0.280	80	0.7303	1.0000	0.7303	0.07107	0.0519	4.56
8	11:10 AM	1.646	0.6	0.463	0.6000	0.278	80	0.7250	1.0000	0.7250	0.07061	0.0512	4.50
9	11:11 AM	1.798	0.6	0.460	0.6000	0.276	80	0.8374	1.0000	0.8374	0.07014	0.0587	5.16
10	11:12 AM	1.951	0.6	0.451	0.6000	0.271	80	0.8488	1.0000	0.8488	0.06875	0.0584	5.13
11	11:13 AM	2.103	0.6	0.448	0.6000	0.269	80	0.8794	1.0000	0.8794	0.06828	0.0600	5.28
12	11:15 AM	2.256	0.6	0.466	0.6000	0.280	80	0.8920	1.0000	0.8920	0.07107	0.0634	5.57
13	11:16 AM	2.408	0.6	0.475	0.6000	0.285	80	0.8398	1.0000	0.8398	0.07246	0.0609	5.35
14	11:21 AM	2.560	0.6	0.485	0.6000	0.291	80	0.8246	1.0000	0.8246	0.07386	0.0609	5.35
15	11:22 AM	2.713	0.6	0.491	0.6000	0.294	80	0.8356	1.0000	0.8356	0.07479	0.0625	5.49
16	11:24 AM	2.865	0.6	0.485	0.6000	0.291	80	0.8166	1.0000	0.8166	0.07386	0.0603	5.30
17	11:25 AM	3.018	0.6	0.494	0.6000	0.296	80	0.7552	1.0000	0.7552	0.07525	0.0568	4.99
18	11:26 AM	3.170	0.2/0.8	0.515	0.2000	0.103	80	0.8562	1.0000	0.7707	0.07850	0.0605	5.32
18	11:26 AM	3.170	0.2/0.8	0.515	0.8000	0.412	80	0.6852	1.0000	0.7707	0.07850	0.0605	5.32
19	11:29 AM	3.322	0.2/0.8	0.530	0.2000	0.106	80	0.8201	1.0000	0.7589	0.08083	0.0613	5.39
19	11:29 AM	3.322	0.2/0.8	0.530	0.8000	0.424	80	0.6976	1.0000	0.7589	0.08083	0.0613	5.39
20	11:32 AM	3.475	0.2/0.8	0.512	0.2000	0.102	80	0.7310	1.0000	0.7054	0.07804	0.0551	4.84
20	11:32 AM	3.475	0.2/0.8	0.512	0.8000	0.410	80	0.6799	1.0000	0.7054	0.07804	0.0551	4.84
21	11:34 AM	3.627	0.2/0.8	0.524	0.2000	0.105	80	0.7407	1.0000	0.6996	0.07990	0.0559	4.91
21	11:34 AM	3.627	0.2/0.8	0.524	0.8000	0.419	80	0.6585	1.0000	0.6996	0.07990	0.0559	4.91
22	11:36 AM	3.780	0.2/0.8	0.543	0.2000	0.109	80	0.6894	1.0000	0.6761	0.08268	0.0559	4.91
22	11:36 AM	3.780	0.2/0.8	0.543	0.8000	0.434	80	0.6627	1.0000	0.6761	0.08268	0.0559	4.91
23	11:39 AM	3.932	0.2/0.6/0.8	0.518	0.2000	0.104	80	0.4037	1.0000	0.5603	0.07897	0.0442	3.89
23	11:39 AM	3.932	0.2/0.6/0.8	0.518	0.6000	0.311	80	0.6233	1.0000	0.5603	0.07897	0.0442	3.89
23	11:39 AM	3.932	0.2/0.6/0.8	0.518	0.8000	0.415	80	0.5908	1.0000	0.5603	0.07897	0.0442	3.89
24	11:42 AM	4.084	0.6	0.466	0.6000	0.280	80	0.2134	1.0000	0.2134	0.07107	0.0152	1.33
25	11:44 AM	4.237	None	0.000	0.0000	0.000	0	0.0000	1.0000	0.2134	0.00000	0.0000	0.00



# Discharge Measurement Summary

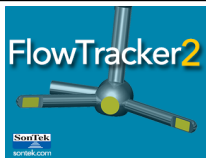
**Site name** ECanal6  
**Site number** 01  
**Operator(s)** VAllen  
**File name** EastCanal\_20230614\_1052.ft  
**Comment**

## Quality Control Settings

**Maximum depth change** 50.00%  
**Maximum spacing change** 100.00%  
**SNR threshold** 10 dB  
**Standard error threshold** 0.0100 m/s  
**Spike threshold** 10.00%  
**Maximum velocity angle** 20.0 deg  
**Maximum tilt angle** 5.0 deg

## Quality control warnings

St#	Time	Location (m)	Method	Depth (m)	%Depth	Measured Depth (m)	Warnings
1	10:52 AM	0.579	0.6	0.393	0.6000	0.236	Velocity Angle > QC
2	10:54 AM	0.732	0.6	0.497	0.6000	0.298	Standard Error > QC
3	10:55 AM	0.884	0.6	0.491	0.6000	0.294	Standard Error > QC
5	10:58 AM	1.189	0.6	0.469	0.6000	0.282	Standard Error > QC
8	11:10 AM	1.646	0.6	0.463	0.6000	0.278	Standard Error > QC
13	11:16 AM	2.408	0.6	0.475	0.6000	0.285	Velocity Angle > QC
14	11:21 AM	2.560	0.6	0.485	0.6000	0.291	Standard Error > QC
17	11:25 AM	3.018	0.6	0.494	0.6000	0.296	Velocity Angle > QC
18	11:26 AM	3.170	0.2/0.8	0.515	0.2000	0.103	Standard Error > QC
18	11:26 AM	3.170	0.2/0.8	0.515	0.8000	0.412	Standard Error > QC
19	11:29 AM	3.322	0.2/0.8	0.530	0.2000	0.106	Standard Error > QC,Rod Angle > QC
19	11:29 AM	3.322	0.2/0.8	0.530	0.8000	0.424	Standard Error > QC,Rod Angle > QC
20	11:32 AM	3.475	0.2/0.8	0.512	0.2000	0.102	Standard Error > QC
20	11:32 AM	3.475	0.2/0.8	0.512	0.8000	0.410	Standard Error > QC
21	11:34 AM	3.627	0.2/0.8	0.524	0.2000	0.105	Standard Error > QC
21	11:34 AM	3.627	0.2/0.8	0.524	0.8000	0.419	Standard Error > QC
22	11:36 AM	3.780	0.2/0.8	0.543	0.2000	0.109	Standard Error > QC,Velocity Angle > QC
22	11:36 AM	3.780	0.2/0.8	0.543	0.8000	0.434	Standard Error > QC,Velocity Angle > QC
23	11:39 AM	3.932	0.2/0.6/0.8	0.518	0.2000	0.104	Standard Error > QC,Velocity Angle > QC
23	11:39 AM	3.932	0.2/0.6/0.8	0.518	0.6000	0.311	Standard Error > QC,Velocity Angle > QC
23	11:39 AM	3.932	0.2/0.6/0.8	0.518	0.8000	0.415	Standard Error > QC,Velocity Angle > QC
24	11:42 AM	4.084	0.6	0.466	0.6000	0.280	Water Depth > QC,Beam SNRs Not Similar,Large SNR Variation,Standard Error > QC
25	11:44 AM	4.237	None	0.000	0.0000	0.000	Water Depth > QC



# Discharge Measurement Summary

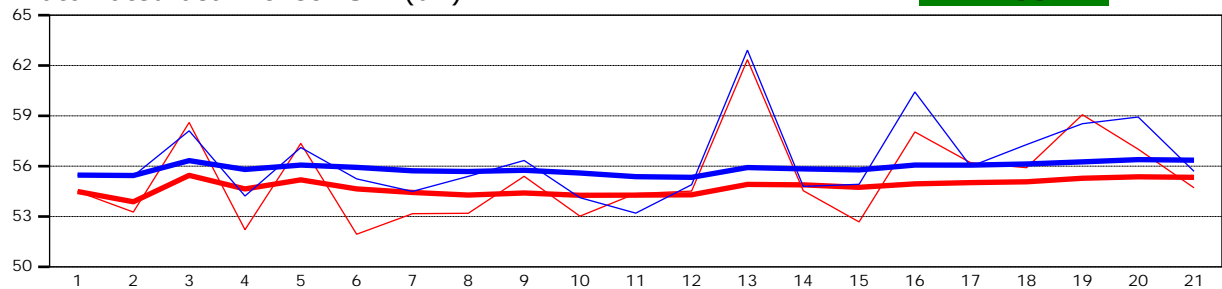
**Site name** ECanal6  
**Site number** 01  
**Operator(s)** VAllen  
**File name** EastCanal\_20230614\_1052.ft  
**Comment**

<b>Beam 1</b>	
<b>Beam 2</b>	

Automated beam check Start time 6/14/2023 10:49:39 AM

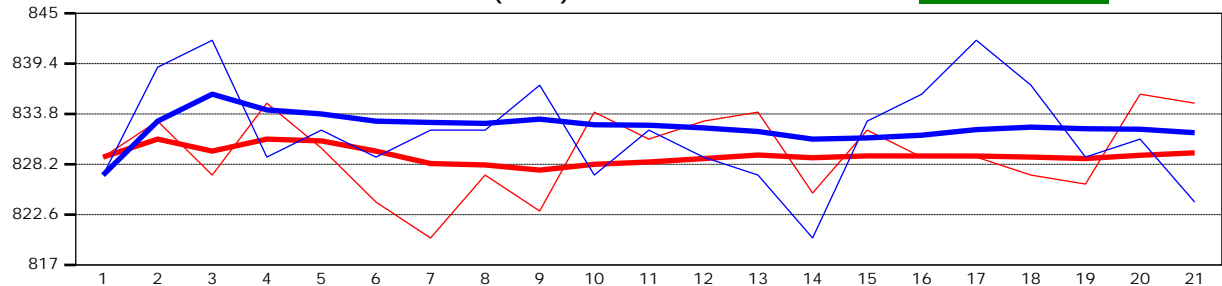
Automated beam check SNR(dB)

PASS



Automated beam check Noise level(cnts)

PASS



## Automated beam check Quality control warnings

No quality control warnings



# Discharge Measurement Summary

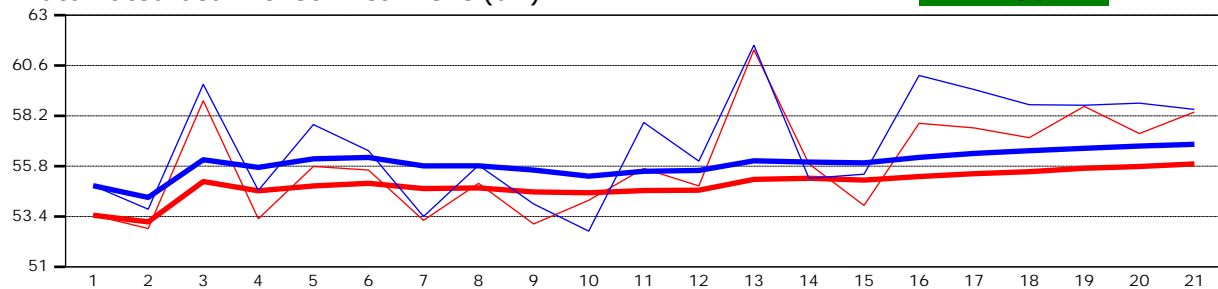
**Site name** ECanal6  
**Site number** 01  
**Operator(s)** VAllen  
**File name** EastCanal\_20230614\_1052.ft  
**Comment**

<b>Beam 1</b>	
<b>Beam 2</b>	

Automated beam check Start time 6/14/2023 10:49:39 AM

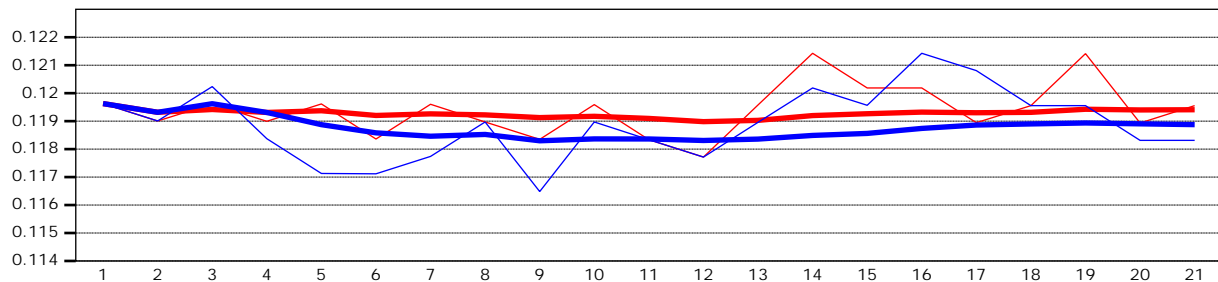
Automated beam check Peak level(dB)

**PASS**



Automated beam check Peak position(m)

**PASS**



## Automated beam check Quality control warnings

No quality control warnings